

Mcl-1 Ab

Cat.#: AF4757
Size: 50ul,100ul,200ul

Concn.: 1mg/ml
Source: Rabbit

Mol.Wt.: 40kDa
Clonality: Polyclonal

Application: WB 1:500-1:2000

Reactivity: Human

Purification: The antiserum was purified by peptide affinity chromatography using SulfoLink™ Coupling Resin (Thermo Fisher Scientific).

Specificity: Mcl-1 Ab detects endogenous levels of Mcl-1.

Immunogen: A synthesized peptide derived from human Mcl-1.

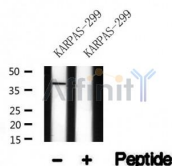
Uniprot: Q07820

Subcellular Location: Membrane. Cytoplasm. Mitochondrion. Nucleus > nucleoplasm. Cytoplasmic, associated with mitochondria.

Tissue Specificity: Expression increases early during phorbol ester-induced differentiation along the monocyte/macrophage pathway in myeloid leukemia cell line ML-1. Rapidly up-regulated by CSF2 in ML-1 cells. Up-regulated by heat shock-induced differentiation. Expression increases early during retinoic acid-induced differentiation.

Similarity: Belongs to the Bcl-2 family.

Storage Condition and Buffer: Rabbit IgG in phosphate buffered saline , pH 7.4, 150mM NaCl, 0.02% sodium azide and 50% glycerol.Store at -20 °C.Stable for 12 months from date of receipt.



Western blot analysis of Mcl-1 in lysates of KARPAS-299, using Mcl-1 Ab(AF4757).

IMPORTANT: For western blot, incubate membrane with diluted primary Ab in 5% w/v milk , 1X TBS, 0.1% Tween@20 at 4°C with gentle shaking, overnight.

procedures. Not for resale without express authorization.