

TOB1 Ab

Cat.#: AF4739
Size: 50ul,100ul,200ul

Concn.: 1mg/ml
Source: Rabbit

Mol.Wt.: 38kDa
Clonality: Polyclonal

Application: WB 1:500-1:2000

Reactivity: Human, Mouse

Purification: The antiserum was purified by peptide affinity chromatography using SulfoLink™ Coupling Resin (Thermo Fisher Scientific).

Specificity: TOB1 Ab detects endogenous levels of TOB1.

Immunogen: A synthesized peptide derived from human TOB1.

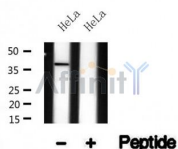
Uniprot: P50616

Subcellular Location: Nucleus;

Tissue Specificity: Ubiquitous.

Similarity: Belongs to the BTG family.

Storage Condition and Buffer: Rabbit IgG in phosphate buffered saline , pH 7.4, 150mM NaCl, 0.02% sodium azide and 50% glycerol. Store at -20 °C. Stable for 12 months from date of receipt.



Western blot analysis of TOB1 in lysates of HeLa , using TOB1 Ab(AF4739).

IMPORTANT: For western blot, incubate membrane with diluted primary Ab in 5% w/v milk , 1X TBS, 0.1% Tween@20 at 4°C with gentle shaking, overnight.

For Research Use Only. Not for use in diagnostic and therapeutic procedures. Not for resale without express authorization.