

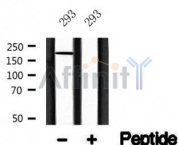
## Tuberin/TSC2 Ab

Cat.#: AF4737  
Size: 50ul, 100ul, 200ul

Concn.: 1mg/ml  
Source: Rabbit

Mol.Wt.: 200kDa  
Clonality: Polyclonal

Application:	WB 1:500-1:2000
Reactivity:	Human
Purification:	The antiserum was purified by peptide affinity chromatography using SulfoLink™ Coupling Resin (Thermo Fisher Scientific).
Specificity:	Tuberin/TSC2 Ab detects endogenous levels of Tuberin/TSC2 .
Immunogen:	A synthesized peptide derived from human Tuberin/TSC2 .
Uniprot:	P49815
Subcellular Location:	Cytoplasm. Membrane. At steady state found in association with membranes.
Tissue Specificity:	Liver, brain, heart, lymphocytes, fibroblasts, biliary epithelium, pancreas, skeletal muscle, kidney, lung and placenta.
Storage Condition and Buffer:	Rabbit IgG in phosphate buffered saline , pH 7.4, 150mM NaCl, 0.02% sodium azide and 50% glycerol. Store at -20 °C. Stable for 12 months from date of receipt.



Western blot analysis of Tuberin/TSC2 in lysates of 293, using Tuberin/TSC2 Ab(AF4737).

**IMPORTANT:** For western blot, incubate membrane with diluted primary Ab in 5% w/v milk , 1X TBS, 0.1% Tween@20 at 4°C with gentle shaking, overnight.

For Research Use Only. Not for use in diagnostic and therapeutic procedures. Not for resale without express authorization.