

TTF-1 Ab

Cat.#: AF4733
Size: 50ul, 100ul, 200ul

Concn.: 1mg/ml
Source: Rabbit

Mol.Wt.: 42kDa
Clonality: Polyclonal

Application: WB 1:500-1:2000

Reactivity: Human, Mouse, Rat

Purification: The antiserum was purified by peptide affinity chromatography using SulfoLink™ Coupling Resin (Thermo Fisher Scientific).

Specificity: TTF-1 Ab detects endogenous levels of TTF-1.

Immunogen: A synthesized peptide derived from human TTF-1.

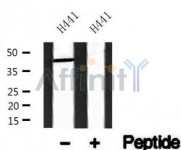
Uniprot: P43699

Subcellular Location: Nucleus.

Tissue Specificity: Thyroid and lung.

Similarity: Belongs to the NK-2 homeobox family.

Storage Condition and Buffer: Rabbit IgG in phosphate buffered saline, pH 7.4, 150mM NaCl, 0.02% sodium azide and 50% glycerol. Store at -20 °C. Stable for 12 months from date of receipt.



Western blot analysis of TTF-1 in lysates of H441, using TTF-1 Ab(AF4733).

IMPORTANT: For western blot, incubate membrane with diluted primary Ab in 5% w/v milk, 1X TBS, 0.1% Tween@20 at 4°C with gentle shaking, overnight.

For Research Use Only. Not for use in diagnostic and therapeutic procedures. Not for resale without express authorization.