

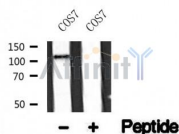
FLT3 Ab

Cat.#: AF4727
Size: 50ul,100ul,200ul

Concn.: 1mg/ml
Source: Rabbit

Mol.Wt.: 113kDa
Clonality: Polyclonal

| | |
|-------------------------------|---|
| Application: | WB 1:500-1:2000 |
| Reactivity: | Human,Mouse,Rat |
| Purification: | The antiserum was purified by peptide affinity chromatography using SulfoLink™ Coupling Resin (Thermo Fisher Scientific). |
| Specificity: | FLT3 Ab detects endogenous levels of FLT3. |
| Immunogen: | A synthesized peptide derived from human FLT3. |
| Uniprot: | P36888 |
| Subcellular Location: | Membrane. |
| Tissue Specificity: | Detected in bone marrow, in hematopoietic stem cells, in myeloid progenitor cells and in granulocyte/macrophage progenitor cells (at protein level). Detected in bone marrow, liver, thymus, spleen and lymph node, and at low levels in kidney and pancreas. Highly expressed in T-cell leukemia. |
| Similarity: | The juxtamembrane autoregulatory region is important for normal regulation of the kinase activity and for maintaining the kinase in an inactive state in the absence of bound ligand. Upon tyrosine phosphorylation, it mediates interaction with the SH2 domains of numerous signaling partners. In-frame internal tandem duplications (ITDs) result in constitutive activation of the kinase. The activity of the mutant kinase can be stimulated further by FLT3LG binding. Belongs to the protein kinase superfamily. Tyr protein kinase family. CSF-1/PDGF receptor subfamily. |
| Storage Condition and Buffer: | Rabbit IgG in phosphate buffered saline , pH 7.4, 150mM NaCl, 0.02% sodium azide and 50% glycerol. Store at -20 °C. Stable for 12 months from date of receipt. |



Western blot analysis of FLT3 in lysates of COS7 , using FLT3 Ab(AF4727).

IMPORTANT: For western blot, incubate membrane with diluted primary Ab in 5% w/v milk , 1X TBS, 0.1% Tween@20 at 4°C with gentle shaking, overnight.

For Research Use Only. Not for use in diagnostic and therapeutic procedures. Not for resale without express authorization.