

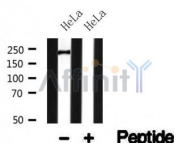
## Myosin IIa Ab

Cat.#: AF4725  
Size: 50ul, 100ul, 200ul

Concn.: 1mg/ml  
Source: Rabbit

Mol.Wt.: 226kDa  
Clonality: Polyclonal

Application:	WB 1:500-1:2000
Reactivity:	Human, Mouse, Rat
Purification:	The antiserum was purified by peptide affinity chromatography using SulfoLink™ Coupling Resin (Thermo Fisher Scientific).
Specificity:	Myosin IIa Ab detects endogenous levels of Myosin IIa.
Immunogen:	A synthesized peptide derived from human Myosin IIa.
Uniprot:	P35579
Subcellular Location:	Cytoskeleton;
Tissue Specificity:	In the kidney, expressed in the glomeruli. Also expressed in leukocytes.
Similarity:	The rodlike tail sequence is highly repetitive, showing cycles of a 28-residue repeat pattern composed of 4 heptapeptides, characteristic for alpha-helical coiled coils. Belongs to the TRAFAC class myosin-kinesin ATPase superfamily. Myosin family.
Storage Condition and Buffer:	Rabbit IgG in phosphate buffered saline, pH 7.4, 150mM NaCl, 0.02% sodium azide and 50% glycerol. Store at -20 °C. Stable for 12 months from date of receipt.



Western blot analysis of Myosin IIa in lysates of HeLa, using Myosin IIa Ab(AF4725).

**IMPORTANT:** For western blot, incubate membrane with diluted primary Ab in 5% w/v milk, 1X TBS, 0.1% Tween@20 at 4°C with gentle shaking, overnight.