

HS1 Ab

Cat.#: AF4707
Size: 50ul,100ul,200ul

Concn.: 1mg/ml
Source: Rabbit

Mol.Wt.: 78kDa
Clonality: Polyclonal

Application: WB 1:500-1:2000

Reactivity: Human,Mouse,Rat

Purification: The antiserum was purified by peptide affinity chromatography using SulfoLink™ Coupling Resin (Thermo Fisher Scientific).

Specificity: HS1 Ab detects endogenous levels of HS1.

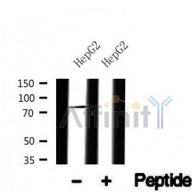
Immunogen: A synthesized peptide derived from human HS1.

Uniprot: P14317

Subcellular Location: Membrane. Cytoplasm. Mitochondrion.

Tissue Specificity: Expressed only in tissues and cells of hematopoietic origin.

Storage Condition and Buffer: Rabbit IgG in phosphate buffered saline , pH 7.4, 150mM NaCl, 0.02% sodium azide and 50% glycerol.Store at -20 °C.Stable for 12 months from date of receipt.



Western blot analysis of HS1 in lysates of HepG2, using HS1 Ab(AF4707).

IMPORTANT: For western blot, incubate membrane with diluted primary Ab in 5% w/v milk , 1X TBS, 0.1% Tween@20 at 4°C with gentle shaking, overnight.

For Research Use Only. Not for use in diagnostic and therapeutic procedures. Not for resale without express authorization.