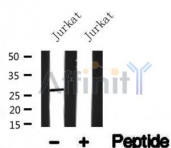


Bcl-2 Ab

Cat.#: AF4700	Concn.: 1mg/ml	Mol.Wt.: 28kDa
Size: 50ul,100ul,200ul	Source: Rabbit	Clonality: Polyclonal

Application:	WB 1:500-1:2000
Reactivity:	Human
Purification:	The antiserum was purified by peptide affinity chromatography using SulfoLink™ Coupling Resin (Thermo Fisher Scientific).
Specificity:	Bcl-2 Ab detects endogenous levels of Bcl-2.
Immunogen:	A synthesized peptide derived from human Bcl-2.
Uniprot:	P10415
Subcellular Location:	Mitochondrion outer membrane. Nucleus membrane. Endoplasmic reticulum membrane.
Tissue Specificity:	Expressed in a variety of tissues.
Similarity:	BH1 and BH2 domains are required for the interaction with BAX and for anti-apoptotic activity. The BH4 motif is required for anti-apoptotic activity and for interaction with RAF1 and EGLN3. The loop between motifs BH4 and BH3 is required for the interaction with NLRP1. Belongs to the Bcl-2 family.
Storage Condition and Buffer:	Rabbit IgG in phosphate buffered saline , pH 7.4, 150mM NaCl, 0.02% sodium azide and 50% glycerol. Store at -20 °C. Stable for 12 months from date of receipt.



Western blot analysis of Bcl-2 in lysates of Jurkat, using Bcl-2 Ab(AF4700).

IMPORTANT: For western blot, incubate membrane with diluted primary Ab in 5% w/v milk , 1X TBS, 0.1% Tween@20 at 4°C with gentle shaking, overnight.