

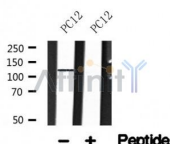
## ULK1 Ab

Cat.#: AF4687  
Size: 50ul, 100ul, 200ul

Concn.: 1mg/ml  
Source: Rabbit

Mol.Wt.: 120kDa  
Clonality: Polyclonal

Application:	WB 1:500-1:2000
Reactivity:	Human, Mouse, Rat
Purification:	The antiserum was purified by peptide affinity chromatography using SulfoLink™ Coupling Resin (Thermo Fisher Scientific).
Specificity:	ULK1 Ab detects endogenous levels of ULK1.
Immunogen:	A synthesized peptide derived from human ULK1.
Uniprot:	O75385
Subcellular Location:	Cytoplasm, cytosol. Preautophagosomal structure. Under starvation conditions, is localized to punctate structures primarily representing the isolation membrane that sequesters a portion of the cytoplasm resulting in the formation of an autophagosome.
Tissue Specificity:	Ubiquitously expressed. Detected in the following adult tissues: skeletal muscle, heart, pancreas, brain, placenta, liver, kidney, and lung.
Similarity:	Belongs to the protein kinase superfamily. Ser/Thr protein kinase family. APG1/unc-51/ULK1 subfamily.
Storage Condition and Buffer:	Rabbit IgG in phosphate buffered saline, pH 7.4, 150mM NaCl, 0.02% sodium azide and 50% glycerol. Store at -20 °C. Stable for 12 months from date of receipt.



Western blot analysis of ULK1 in lysates of PC12, using ULK1 Ab(AF4687).

**IMPORTANT:** For western blot, incubate membrane with diluted primary Ab in 5% w/v milk, 1X TBS, 0.1% Tween@20 at 4°C with gentle shaking, overnight.



**Affinity Biosciences**

website: [www.affbiotech.com](http://www.affbiotech.com)

order: [order@affbiotech.com](mailto:order@affbiotech.com)

---

For Research Use Only. Not for use in diagnostic and therapeutic procedures. Not for resale without express authorization.