

## PIK3CA Ab

Cat.#: AF4669  
Size: 50ul,100ul,200ul

Concn.: 1mg/ml  
Source: Rabbit

Mol.Wt.: 110kDa  
Clonality: Polyclonal

Application: WB 1:500-1:2000

Reactivity: Human,Mouse,Rat

Purification: The antiserum was purified by peptide affinity chromatography using SulfoLink™ Coupling Resin (Thermo Fisher Scientific).

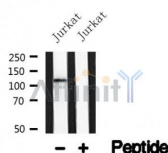
Specificity: PIK3CA Ab detects endogenous levels of PIK3CA.

Immunogen: A synthesized peptide derived from human PIK3CA.

Uniprot: P42336

Similarity: The PI3K-ABD domain and the PI3K-RBD domain interact with the PI3K/PI4K kinase domain. The C2 PI3K-type domain may facilitate the recruitment to the plasma membrane. The inhibitory interactions with PIK3R1 are mediated by the PI3K-ABD domain and the C2 PI3K-type domain with the iSH2 (inter-SH2) region of PIK3R1, and the C2 PI3K-type domain, the PI3K helical domain, and the PI3K/PI4K kinase domain with the nSH2 (N-terminal SH2) region of PIK3R1. Belongs to the PI3/PI4-kinase family.

Storage Condition and Buffer: Rabbit IgG in phosphate buffered saline , pH 7.4, 150mM NaCl, 0.02% sodium azide and 50% glycerol. Store at -20 °C. Stable for 12 months from date of receipt.



Western blot analysis of PIK3CA in lysates of Jurkat , using PIK3CA Ab(AF4669).

**IMPORTANT:** For western blot, incubate membrane with diluted primary Ab in 5% w/v milk , 1X TBS, 0.1% Tween@20 at 4°C with gentle shaking, overnight.

For Research Use Only. Not for use in diagnostic and therapeutic procedures. Not for resale without express authorization.