

CYLD Ab

Cat.#: AF4637
Size: 50ul,100ul,200ul

Concn.: 1mg/ml
Source: Rabbit

Mol.Wt.: 108kDa
Clonality: Polyclonal

Application: WB 1:500-1:2000

Reactivity: Human,Mouse,Rat

Purification: The antiserum was purified by peptide affinity chromatography using SulfoLink™ Coupling Resin (Thermo Fisher Scientific).

Specificity: CYLD Ab detects endogenous levels of CYLD.

Immunogen: A synthesized peptide derived from human CYLD.

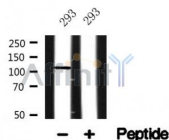
Uniprot: Q9NQC7

Subcellular Location: Cytoplasm. Cytoplasm > perinuclear region. Cytoplasm > cytoskeleton. Cell membrane. Detected at the microtubule cytoskeleton during interphase. Detected at the midbody during telophase.

Tissue Specificity: Detected in fetal brain, testis, and skeletal muscle, and at a lower level in adult brain, leukocytes, liver, heart, kidney, spleen, ovary and lung. Isoform 2 is found in all tissues except kidney.

Similarity: Belongs to the peptidase C19 family.

Storage Condition and Buffer: Rabbit IgG in phosphate buffered saline , pH 7.4, 150mM NaCl, 0.02% sodium azide and 50% glycerol.Store at -20 °C.Stable for 12 months from date of receipt.



Western blot analysis of CYLD in lysates of 293 , using CYLD Ab(AF4637).

IMPORTANT: For western blot, incubate membrane with diluted primary Ab in 5% w/v milk , 1X TBS, 0.1% Tween@20 at 4°C with gentle shaking, overnight.

procedures. Not for resale without express authorization.