

NEDD4 Ab

Cat.#: AF4636
Size: 50ul,100ul,200ul

Concn.: 1mg/ml
Source: Rabbit

Mol.Wt.: 110kDa
Clonality: Polyclonal

Application: WB 1:500-1:2000

Reactivity: Human,Mouse

Purification: The antiserum was purified by peptide affinity chromatography using SulfoLink™ Coupling Resin (Thermo Fisher Scientific).

Specificity: NEDD4 Ab detects endogenous levels of NEDD4.

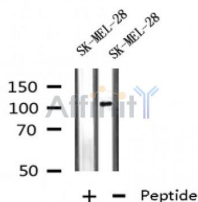
Immunogen: A synthesized peptide derived from human NEDD4.

Uniprot: P46934

Subcellular Location: Cytoplasm. Cell membrane. Recruited to the plasma membrane by GRB10. Once complexed with GRB10 and IGF1R, follows IGF1R internalization, remaining associated with early endosomes. Uncouples from IGF1R-containing endosomes before the sorting of the receptor to the lysosomal compartment (By similarity). May be recruited to exosomes by NDFIP1.

Similarity: The WW domains mediate interaction with PPxY motif-containing proteins (PubMed:21191027). The WW domains mediate interaction with LITAF, RNF11, WBP1, WBP2, PMEPA1, NDFIP1 and PRRG2 (By similarity).

Storage Condition and Buffer: Rabbit IgG in phosphate buffered saline , pH 7.4, 150mM NaCl, 0.02% sodium azide and 50% glycerol.Store at -20 °C.Stable for 12 months from date of receipt.



Western blot analysis of NEDD4 in lysates of SK-MEL-28, using NEDD4 Ab(AF4636).

IMPORTANT: For western blot, incubate membrane with diluted primary Ab in 5% w/v milk , 1X TBS, 0.1% Tween@20 at 4°C with gentle shaking, overnight.



Affinity Biosciences

website: www.affbiotech.com

order: order@affbiotech.com

For Research Use Only. Not for use in diagnostic and therapeutic procedures. Not for resale without express authorization.