

APAF1 Ab

Cat.#: AF4633
Size: 50ul, 100ul, 200ul

Concn.: 1mg/ml
Source: Rabbit

Mol.Wt.: 139kDa
Clonality: Polyclonal

Application: WB 1:500-1:2000

Reactivity: Human, Mouse, Rat

Purification: The antiserum was purified by peptide affinity chromatography using SulfoLink™ Coupling Resin (Thermo Fisher Scientific).

Specificity: APAF1 Ab detects endogenous levels of APAF1.

Immunogen: A synthesized peptide derived from human APAF1.

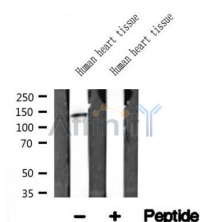
Uniprot: O14727

Subcellular Location: Cytoplasm.

Tissue Specificity: Ubiquitous. Highest levels of expression in adult spleen and peripheral blood leukocytes, and in fetal brain, kidney and lung. Isoform 1 is expressed in heart, kidney and liver.

Similarity: The CARD domain mediates interaction with AIP1. The monomeric form is autoinhibited in a closed conformation through a bound ADP at the nucleotide binding site. Exchange of ADP for ATP and binding of cytochrome c trigger a large conformational change where the first WD repeat region swings out, allowing the NB-ARC domain to rotate and expose the contact areas for oligomerization (By similarity).

Storage Condition and Buffer: Rabbit IgG in phosphate buffered saline, pH 7.4, 150mM NaCl, 0.02% sodium azide and 50% glycerol. Store at -20 °C. Stable for 12 months from date of receipt.



Western blot analysis of APAF1 in lysates of Human heart tissue, using APAF Ab(AF4633).

IMPORTANT: For western blot, incubate membrane with diluted primary Ab in 5% w/v milk, 1X TBS, 0.1% Tween@20 at 4°C with gentle shaking,

overnight.

For Research Use Only. Not for use in diagnostic and therapeutic procedures. Not for resale without express authorization.