

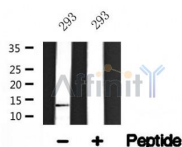
RBX1 Ab

Cat.#: AF4625
Size: 50ul,100ul,200ul

Concn.: 1mg/ml
Source: Rabbit

Mol.Wt.: 13kDa
Clonality: Polyclonal

Application:	WB 1:500-1:2000
Reactivity:	Human,Mouse,Rat
Purification:	The antiserum was purified by peptide affinity chromatography using SulfoLink™ Coupling Resin (Thermo Fisher Scientific).
Specificity:	RBX1 Ab detects endogenous levels of RBX1.
Immunogen:	A synthesized peptide derived from human RBX1.
Uniprot:	P62877
Subcellular Location:	Cytoplasm. Nucleus.
Tissue Specificity:	Widely expressed.
Similarity:	The RING-type zinc finger domain is essential for ubiquitin ligase activity. It coordinates an additional third zinc ion.Belongs to the RING-box family.
Storage Condition and Buffer:	Rabbit IgG in phosphate buffered saline , pH 7.4, 150mM NaCl, 0.02% sodium azide and 50% glycerol.Store at -20 °C.Stable for 12 months from date of receipt.



Western blot analysis of RBX1 in lysates of 293, using RBX1 Ab(AF4625).

IMPORTANT: For western blot, incubate membrane with diluted primary Ab in 5% w/v milk , 1X TBS, 0.1% Tween@20 at 4°C with gentle shaking, overnight.

For Research Use Only. Not for use in diagnostic and therapeutic procedures. Not for resale without express authorization.