

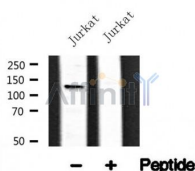
ASPP2 Ab

Cat.#: AF4619
Size: 50ul,100ul,200ul

Concn.: 1mg/ml
Source: Rabbit

Mol.Wt.: 126kDa
Clonality: Polyclonal

Application:	WB 1:500-1:2000
Reactivity:	Human,Mouse,Rat
Purification:	The antiserum was purified by peptide affinity chromatography using SulfoLink™ Coupling Resin (Thermo Fisher Scientific).
Specificity:	ASPP2 Ab detects endogenous levels of ASPP2.
Immunogen:	A synthesized peptide derived from human ASPP2.
Uniprot:	Q13625
Subcellular Location:	Cytoplasm > perinuclear region. Nucleus. Predominantly found in the perinuclear region. Some small fraction is nuclear. Sequester in the cytoplasm on overexpression of DDX42.
Tissue Specificity:	Widely expressed. Expressed in spleen, thymus, prostate, testis, ovary, small intestine, colon and peripheral blood leukocyte. Reduced expression in breast carcinomas expressing a wild-type TP53 protein. Overexpressed in lung cancer cell lines.
Similarity:	The ankyrin repeats and the SH3 domain are required for a specific interactions with TP53.Belongs to the ASPP family.
Storage Condition and Buffer:	Rabbit IgG in phosphate buffered saline , pH 7.4, 150mM NaCl, 0.02% sodium azide and 50% glycerol.Store at -20 °C.Stable for 12 months from date of receipt.



Western blot analysis of ASPP2 in lysates of Jurkat , using ASPP2 Ab(AF4619).

IMPORTANT: For western blot, incubate membrane with diluted primary Ab in 5% w/v milk , 1X TBS, 0.1% Tween@20 at 4°C with gentle shaking, overnight.



Affinity Biosciences

website: www.affbiotech.com

order: order@affbiotech.com

For Research Use Only. Not for use in diagnostic and therapeutic procedures. Not for resale without express authorization.