

DEPTOR Ab

Cat.#: AF4613
Size: 50ul,100ul,200ul

Concn.: 1mg/ml
Source: Rabbit

Mol.Wt.: 48kDa
Clonality: Polyclonal

Application: WB 1:500-1:2000

Reactivity: Human,Mouse,Rat

Purification: The antiserum was purified by peptide affinity chromatography using SulfoLink™ Coupling Resin (Thermo Fisher Scientific).

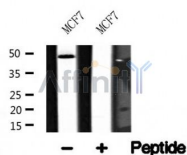
Specificity: DEPTOR Ab detects endogenous levels of DEPTOR.

Immunogen: A synthesized peptide derived from human DEPTOR.

Uniprot: Q8TB45

Tissue Specificity: Expression is negatively regulated by both mTORC1 and mTORC2 (at protein level).

Storage Condition and Buffer: Rabbit IgG in phosphate buffered saline , pH 7.4, 150mM NaCl, 0.02% sodium azide and 50% glycerol.Store at -20 °C.Stable for 12 months from date of receipt.



Western blot analysis of DEPTOR in lysates of MCF7, using DEPTOR Ab(AF4613).

IMPORTANT: For western blot, incubate membrane with diluted primary Ab in 5% w/v milk , 1X TBS, 0.1% Tween@20 at 4°C with gentle shaking, overnight.

For Research Use Only. Not for use in diagnostic and therapeutic procedures. Not for resale without express authorization.