

Phospho-RIPK3(Ser316) Ab

Cat.#: AF4508

Size: 50ul, 100ul, 200ul

Concn.: 1mg/ml

Source: Rabbit

Mol.Wt.: 46-62kDa

Clonality: Polyclonal

Application: WB 1:500-1:2000

Reactivity: Human

Purification: The Ab is from purified rabbit serum by affinity purification via sequential chromatography on phospho- and non-phospho-peptide affinity columns.

Specificity: Phospho-RIPK3(Ser316) Ab detects endogenous levels of RIPK3 only when phosphorylated at Ser316.

Immunogen: A synthesized peptide derived from human RIPK3 around the phosphorylation site of Ser316.

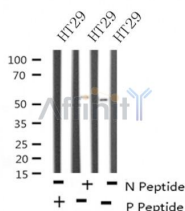
Uniprot: Q9Y572

Subcellular Location: Cytoplasm.

Tissue Specificity: Highly expressed in the pancreas. Detected at lower levels in heart, placenta, lung and kidney. Isoform 3 is significantly increased in colon and lung cancers.

Similarity: Belongs to the protein kinase superfamily. TKL Ser/Thr protein kinase family.

Storage Condition and Buffer: Rabbit IgG in phosphate buffered saline, pH 7.4, 150mM NaCl, 0.02% sodium azide and 50% glycerol. Store at -20 °C. Stable for 12 months from date of receipt.



Western blot analysis of Phospho-RIPK3(Ser316) in lysates of HT29, using Phospho-RIPK3(Ser316) Ab(AF4508).

IMPORTANT: For western blot, incubate membrane with diluted primary Ab in 5% w/v milk, 1X TBS, 0.1% Tween@20 at 4°C with gentle shaking, overnight.

For Research Use Only. Not for use in diagnostic and therapeutic procedures. Not for resale without express authorization.