

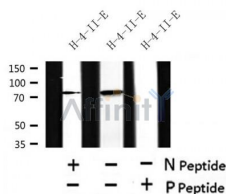
## Phospho-Gab2 (Ser159) Ab

Cat.#: AF4503  
Size: 50ul, 100ul, 200ul

Concn.: 1mg/ml  
Source: Rabbit

Mol.Wt.: 74kDa  
Clonality: Polyclonal

Application:	WB 1:500-1:2000
Reactivity:	Human, Mouse, Rat
Purification:	The Ab is from purified rabbit serum by affinity purification via sequential chromatography on phospho- and non-phospho-peptide affinity columns.
Specificity:	Phospho-Gab2 (Ser159) Ab detects endogenous levels of Gab2 only when phosphorylated at Ser159.
Immunogen:	A synthesized peptide derived from human Gab2 around the phosphorylation site of Ser159.
Uniprot:	Q9UQC2
Subcellular Location:	Cytoplasm. Cell membrane.
Similarity:	The SH3-binding motifs mediate interaction with SHC1 and GRB2. The PH domain mediates phosphatidylinositol 3,4,5-trisphosphate and phosphatidylinositol 3,4-bisphosphate binding. Belongs to the GAB family.
Storage Condition and Buffer:	Rabbit IgG in phosphate buffered saline, pH 7.4, 150mM NaCl, 0.02% sodium azide and 50% glycerol. Store at -20 °C. Stable for 12 months from date of receipt.



Western blot analysis of Phospho-Gab2 (Ser159) in lysates of H-4-II-E, using Phospho-Gab2 (Ser159) Ab(AF4503).

**IMPORTANT:** For western blot, incubate membrane with diluted primary Ab in 5% w/v milk, 1X TBS, 0.1% Tween@20 at 4°C with gentle shaking, overnight.

For Research Use Only. Not for use in diagnostic and therapeutic procedures. Not for resale without express authorization.