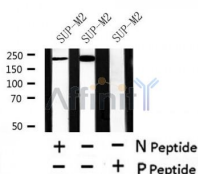


Phospho-ALK (Tyr1282/1283) Ab

Cat.#: AF4501	Concn.: 1mg/ml	Mol.Wt.: 80kDa (NPM-ALK), 220kDa (ALK)
Size: 50ul, 100ul, 200ul	Source: Rabbit	Clonality: Polyclonal
Application:	WB 1:500-1:2000	
Reactivity:	Human, Mouse, Rat	
Purification:	The Ab is from purified rabbit serum by affinity purification via sequential chromatography on phospho- and non-phospho-peptide affinity columns.	
Specificity:	Phospho-ALK (Tyr1282/1283) Ab detects endogenous levels of ALK only when phosphorylated at Tyr1282/1283.	
Immunogen:	A synthesized peptide derived from human ALK around the phosphorylation site of Tyr1282/1283.	
Uniprot:	Q9UM73	
Subcellular Location:	Cell membrane. Membrane attachment was crucial for promotion of neuron-like differentiation and cell proliferation arrest through specific activation of the MAP kinase pathway.	
Tissue Specificity:	Expressed in brain and CNS. Also expressed in the small intestine and testis, but not in normal lymphoid cells.	
Similarity:	Belongs to the protein kinase superfamily. Tyr protein kinase family. Insulin receptor subfamily.	
Storage Condition and Buffer:	Rabbit IgG in phosphate buffered saline, pH 7.4, 150mM NaCl, 0.02% sodium azide and 50% glycerol. Store at -20 °C. Stable for 12 months from date of receipt.	



Western blot analysis of Phospho-ALK (Tyr1282/1283) in lysates of SUP-M2, using Phospho-ALK (Tyr1282/1283) Ab(AF4501).

IMPORTANT: For western blot, incubate membrane with diluted primary Ab in 5% w/v milk, 1X TBS, 0.1% Tween@20 at 4°C with gentle shaking, overnight.



Affinity Biosciences

website: www.affbiotech.com

order: order@affbiotech.com

For Research Use Only. Not for use in diagnostic and therapeutic procedures. Not for resale without express authorization.