

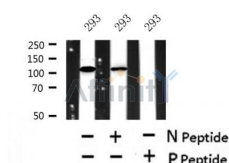
Phospho-CYLD (Ser418) Ab

Cat.#: AF4496
Size: 50ul, 100ul, 200ul

Concn.: 1mg/ml
Source: Rabbit

Mol.Wt.: 107kDa
Clonality: Polyclonal

Application:	WB 1:500-1:2000
Reactivity:	Human
Purification:	The Ab is from purified rabbit serum by affinity purification via sequential chromatography on phospho- and non-phospho-peptide affinity columns.
Specificity:	Phospho-CYLD (Ser418) Ab detects endogenous levels of CYLD only when phosphorylated at Ser418.
Immunogen:	A synthesized peptide derived from human CYLD around the phosphorylation site of Ser418.
Uniprot:	Q9NQC7
Subcellular Location:	Cytoplasm. Cytoplasm > perinuclear region. Cytoplasm > cytoskeleton. Cell membrane. Detected at the microtubule cytoskeleton during interphase. Detected at the midbody during telophase.
Tissue Specificity:	Detected in fetal brain, testis, and skeletal muscle, and at a lower level in adult brain, leukocytes, liver, heart, kidney, spleen, ovary and lung. Isoform 2 is found in all tissues except kidney.
Similarity:	Belongs to the peptidase C19 family.
Storage Condition and Buffer:	Rabbit IgG in phosphate buffered saline , pH 7.4, 150mM NaCl, 0.02% sodium azide and 50% glycerol. Store at -20 °C. Stable for 12 months from date of receipt.



Western blot analysis of Phospho-CYLD (Ser418) in lysates of 293, using Phospho-CYLD (Ser418) Ab(AF4496).

IMPORTANT: For western blot, incubate membrane with diluted primary Ab in 5% w/v milk, 1X TBS, 0.1% Tween@20 at 4°C with gentle shaking, overnight.



Affinity Biosciences

website: www.affbiotech.com

order: order@affbiotech.com

For Research Use Only. Not for use in diagnostic and therapeutic procedures. Not for resale without express authorization.