

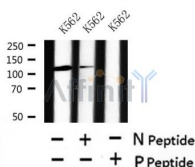
Phospho-NEDD4L (Ser342) Ab

Cat.#: AF4486
Size: 50ul, 100ul, 200ul

Concn.: 1mg/ml
Source: Rabbit

Mol.Wt.: 112kDa
Clonality: Polyclonal

Application:	WB 1:500-1:2000
Reactivity:	Human, Mouse, Rat
Purification:	The Ab is from purified rabbit serum by affinity purification via sequential chromatography on phospho- and non-phospho-peptide affinity columns.
Specificity:	Phospho-NEDD4L (Ser342) Ab detects endogenous levels of NEDD4L only when phosphorylated at Ser342.
Immunogen:	A synthesized peptide derived from human NEDD4L around the phosphorylation site of Ser342.
Uniprot:	Q96PU5
Subcellular Location:	Cytoplasm. May be recruited to exosomes by NDFIP1.
Tissue Specificity:	Ubiquitously expressed, with highest levels in prostate, pancreas and kidney (PubMed:14615060, PubMed:15496141, PubMed:19664597). Expressed in melanocytes (PubMed:23999003).
Storage Condition and Buffer:	Rabbit IgG in phosphate buffered saline, pH 7.4, 150mM NaCl, 0.02% sodium azide and 50% glycerol. Store at -20 °C. Stable for 12 months from date of receipt.



Western blot analysis of Phospho-NEDD4L (Ser342) in lysates of K562, using Phospho-NEDD4L (Ser342) Ab (AF4486).

IMPORTANT: For western blot, incubate membrane with diluted primary Ab in 5% w/v milk, 1X TBS, 0.1% Tween@20 at 4°C with gentle shaking, overnight.

For Research Use Only. Not for use in diagnostic and therapeutic procedures. Not for resale without express authorization.