

phospho-IRF4(Tyr122/125) Ab

Cat.#: AF4476

Size: 50ul, 100ul, 200ul

Concn.: 1mg/ml

Source: Rabbit

Mol.Wt.: 51kDa

Clonality: Polyclonal

Application: WB 1:500-1:2000

Reactivity: Human, Mouse, Rat

Purification: The Ab is from purified rabbit serum by affinity purification via sequential chromatography on phospho- and non-phospho-peptide affinity columns.

Specificity: phospho-IRF4(Y122/125) antibody detects endogenous levels of phospho-IRF4 only when phosphorylated at Y122/125.

Immunogen: A synthesized peptide derived from human phospho-IRF4 around the phosphorylation site of Y122/125.

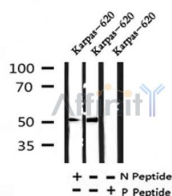
Uniprot: Q15306

Subcellular Location: Nucleus.

Tissue Specificity: Lymphoid cells.

Similarity: Belongs to the IRF family.

Storage Condition and Buffer: Rabbit IgG in phosphate buffered saline, pH 7.4, 150mM NaCl, 0.02% sodium azide and 50% glycerol. Store at -20 °C. Stable for 12 months from date of receipt.



Western blot analysis of phospho-IRF4(Y122/125) antibody in lysates of Karpas-620, using phospho-IRF4(Y122/125) antibody(AF4476).

IMPORTANT: For western blot, incubate membrane with diluted primary Ab in 5% w/v milk, 1X TBS, 0.1% Tween@20 at 4°C with gentle shaking, overnight.

For Research Use Only. Not for use in diagnostic and therapeutic procedures. Not for resale without express authorization.