

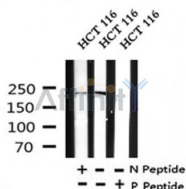
Phospho-Scribble (Ser1220) Ab

Cat.#: AF4471
Size: 50ul, 100ul, 200ul

Concn.: 1mg/ml
Source: Rabbit

Mol.Wt.: 240kDa
Clonality: Polyclonal

Application:	WB 1:500-1:2000
Reactivity:	Human, Mouse
Purification:	The Ab is from purified rabbit serum by affinity purification via sequential chromatography on phospho- and non-phospho-peptide affinity columns.
Specificity:	Phospho-Scribble (Ser1220) Ab detects endogenous levels of Scribble only when phosphorylated at Ser1220.
Immunogen:	A synthesized peptide derived from human Scribble around the phosphorylation site of Ser1220.
Uniprot:	Q14160
Subcellular Location:	Cell membrane. Cell junction > adherens junction. Cytoplasm. Targeting to cell-cell junctions which is CDH1-dependent is required for the pro-apoptotic activity. Localizes to neuronal post- and pre-synaptic regions.
Tissue Specificity:	Expressed in kidney, skeletal muscles, liver, lung, breast, intestine, placenta and skin mainly in epithelial cells (at protein level).
Similarity:	Belongs to the LAP (LRR and PDZ) protein family.
Storage Condition and Buffer:	Rabbit IgG in phosphate buffered saline , pH 7.4, 150mM NaCl, 0.02% sodium azide and 50% glycerol. Store at -20 °C. Stable for 12 months from date of receipt.



Western blot analysis of Phospho-Scribble (Ser1220) in lysates of HCT 116, using Phospho-Scribble (Ser1220) Ab(AF4471).

IMPORTANT: For western blot, incubate membrane with diluted primary Ab in 5% w/v milk , 1X TBS, 0.1% Tween@20 at 4°C with gentle shaking, overnight.



Affinity Biosciences

website: www.affbiotech.com

order: order@affbiotech.com

For Research Use Only. Not for use in diagnostic and therapeutic procedures. Not for resale without express authorization.