

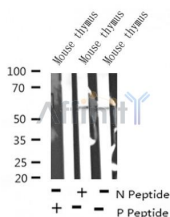
Phospho-RUNX2 (S340) Ab

Cat.#: AF4470
Size: 50ul, 100ul, 200ul

Concn.: 1mg/ml
Source: Rabbit

Mol.Wt.: 50-60kDa
Clonality: Polyclonal

Application:	WB 1:500-1:2000
Reactivity:	Human, Mouse, Rat
Purification:	The Ab is from purified rabbit serum by affinity purification via sequential chromatography on phospho-peptide and non-phospho-peptide affinity columns.
Specificity:	RUNX2 (Phospho-S340) Ab detects endogenous levels of RUNX2 only when phosphorylated at S340.
Immunogen:	A synthesized peptide derived from human RUNX2 around the phosphorylation site of S340.
Uniprot:	Q13950
Subcellular Location:	Nucleus.
Tissue Specificity:	Specifically expressed in osteoblasts.
Similarity:	A proline/serine/threonine rich region at the C-terminus is necessary for transcriptional activation of target genes and contains the phosphorylation sites.
Storage Condition and Buffer:	Rabbit IgG in phosphate buffered saline , pH 7.4, 150mM NaCl, 0.02% sodium azide and 50% glycerol. Store at -20 °C. Stable for 12 months from date of receipt.



Western blot analysis of RUNX2 (Phospho-S340) in lysates of Mouse thymus , using RUNX2 (Phospho-S340) Ab(AF4470).

IMPORTANT: For western blot, incubate membrane with diluted primary Ab in 5% w/v milk , 1X TBS, 0.1% Tween@20 at 4°C with gentle shaking, overnight.

For Research Use Only. Not for use in diagnostic and therapeutic procedures. Not for resale without express authorization.