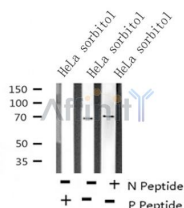


Phospho-PAK1 (Thr423) /PAK2 (Thr402) Ab

Cat.#: AF4463	Concn.: 1mg/ml	Mol.Wt.: 61-67kDa (PAK2),68-74 kDa (PAK1/3)
Size: 50ul,100ul,200ul	Source: Rabbit	Clonality: Polyclonal
Application:	WB 1:500-1:2000	
Reactivity:	Human,Mouse,Rat	
Purification:	The Ab is from purified rabbit serum by affinity purification via sequential chromatography on phospho- and non-phospho-peptide affinity columns.	
Specificity:	Phospho-PAK1 (Thr423) /PAK2 (Thr402) Ab detects endogenous levels of PAK1 only when phosphorylated at Thr423.	
Immunogen:	A synthesized peptide derived from human PAK1 around the phosphorylation site of Thr423.	
Uniprot:	Q13153	
Subcellular Location:	Cytoplasm. Cell junction > focal adhesion. Recruited to focal adhesions upon activation.	
Tissue Specificity:	Overexpressed in gastric cancer cells and tissues (at protein level) (PubMed:25766321).	
Similarity:	Belongs to the protein kinase superfamily. STE Ser/Thr protein kinase family. STE20 subfamily.	
Storage Condition and Buffer:	Rabbit IgG in phosphate buffered saline , pH 7.4, 150mM NaCl, 0.02% sodium azide and 50% glycerol.Store at -20 °C.Stable for 12 months from date of receipt.	



Western blot analysis of Phospho-PAK1 (Thr423) /PAK2 (Thr402) in lysates of HeLa treated with 0.4 M sorbitol for 5min, using Phospho-PAK1 (Thr423) /PAK2 (Thr402) Ab(AF4463).

IMPORTANT: For western blot, incubate membrane with diluted primary Ab in 5% w/v milk , 1X TBS, 0.1% Tween@20 at 4°C with gentle shaking, overnight.



Affinity Biosciences

website: www.affbiotech.com

order: order@affbiotech.com

For Research Use Only. Not for use in diagnostic and therapeutic procedures. Not for resale without express authorization.