

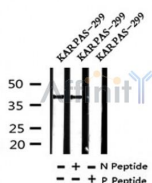
Phospho-Mcl-1 (Ser64) Ab

Cat.#: AF4457
Size: 50ul,100ul,200ul

Concn.: 1mg/ml
Source: Rabbit

Mol.Wt.: 40kDa
Clonality: Polyclonal

Application:	WB 1:500-1:2000
Reactivity:	Human
Purification:	The Ab is from purified rabbit serum by affinity purification via sequential chromatography on phospho- and non-phospho-peptide affinity columns.
Specificity:	Phospho-Mcl-1 (Ser64) Ab detects endogenous levels of Mcl-1 only when phosphorylated at Ser64.
Immunogen:	A synthesized peptide derived from human Mcl-1 around the phosphorylation site of Ser64.
Uniprot:	Q07820
Subcellular Location:	Membrane. Cytoplasm. Mitochondrion. Nucleus > nucleoplasm. Cytoplasmic, associated with mitochondria.
Tissue Specificity:	Expression increases early during phorbol ester-induced differentiation along the monocyte/macrophage pathway in myeloid leukemia cell line ML-1. Rapidly up-regulated by CSF2 in ML-1 cells. Up-regulated by heat shock-induced differentiation. Expression increases early during retinoic acid-induced differentiation.
Similarity:	Belongs to the Bcl-2 family.
Storage Condition and Buffer:	Rabbit IgG in phosphate buffered saline , pH 7.4, 150mM NaCl, 0.02% sodium azide and 50% glycerol.Store at -20 °C.Stable for 12 months from date of receipt.



Western blot analysis of Phospho-Mcl-1 (Ser64) in lysates of KARPAS-299, using Phospho-Mcl-1 (Ser64) Ab(AF4457).

IMPORTANT: For western blot, incubate membrane with diluted primary Ab in 5% w/v milk , 1X TBS, 0.1% Tween@20 at 4°C with gentle shaking, overnight.



Affinity Biosciences

website: www.affbiotech.com

order: order@affbiotech.com

For Research Use Only. Not for use in diagnostic and therapeutic procedures. Not for resale without express authorization.