

Phospho-PP2A-alpha (Tyr307) Ab

Cat.#: AF4453

Size: 50ul, 100ul, 200ul

Concn.: 1mg/ml

Source: Rabbit

Mol.Wt.: 35kDa

Clonality: Polyclonal

Application: WB 1:500-1:2000

Reactivity: Human, Mouse, Rat

Purification: The Ab is from purified rabbit serum by affinity purification via sequential chromatography on phospho-peptide and non-phospho-peptide affinity columns.

Specificity: PP2A-alpha (Phospho-Tyr307) Ab detects endogenous levels of PP2A-alpha only when phosphorylated at Tyr307.

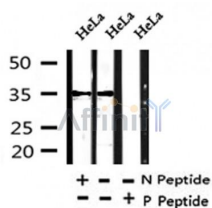
Immunogen: A synthesized peptide derived from human PP2A-alpha around the phosphorylation site of Tyr307.

Uniprot: P67775

Subcellular Location: Cytoplasm. Nucleus. Chromosome > centromere. Cytoplasm > cytoskeleton > spindle pole. In prometaphase cells, but not in anaphase cells, localizes at centromeres. During mitosis, also found at spindle poles. Centromeric localization requires the presence of SGOL2.

Similarity: Belongs to the PPP phosphatase family. PP-1 subfamily.

Storage Condition and Buffer: Rabbit IgG in phosphate buffered saline, pH 7.4, 150mM NaCl, 0.02% sodium azide and 50% glycerol. Store at -20 °C. Stable for 12 months from date of receipt.



Western blot analysis of PP2A-alpha (Phospho-Tyr307) in lysates of HeLa, using PP2A-alpha (Phospho-Tyr307) Ab(AF4453).

IMPORTANT: For western blot, incubate membrane with diluted primary Ab in 5% w/v milk, 1X TBS, 0.1% Tween@20 at 4°C with gentle shaking, overnight.

For Research Use Only. Not for use in diagnostic and therapeutic procedures. Not for resale without express authorization.