

Phospho-Rpt6 (Ser120) Ab

Cat.#: AF4452

Size: 50ul, 100ul, 200ul

Concn.: 1mg/ml

Source: Rabbit

Mol.Wt.: 46kDa

Clonality: Polyclonal

Application: WB 1:500-1:2000

Reactivity: Human, Mouse, Rat

Purification: The Ab is from purified rabbit serum by affinity purification via sequential chromatography on phospho- and non-phospho-peptide affinity columns.

Specificity: Phospho-Rpt6 (S120) Ab detects endogenous levels of Rpt6 only when phosphorylated at S120.

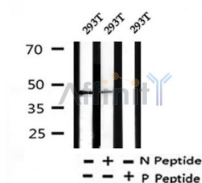
Immunogen: A synthesized peptide derived from human Rpt6 around the phosphorylation site of S120.

Uniprot: P62195

Subcellular Location: Cytoplasm. Nucleus.

Similarity: Belongs to the AAA ATPase family.

Storage Condition and Buffer: Rabbit IgG in phosphate buffered saline, pH 7.4, 150mM NaCl, 0.02% sodium azide and 50% glycerol. Store at -20 °C. Stable for 12 months from date of receipt.



Western blot analysis of Phospho-Rpt6 (S120) in lysates of 293T, using Phospho-Rpt6 (S120) Ab(AF4452).

IMPORTANT: For western blot, incubate membrane with diluted primary Ab in 5% w/v milk, 1X TBS, 0.1% Tween@20 at 4°C with gentle shaking, overnight.

For Research Use Only. Not for use in diagnostic and therapeutic procedures. Not for resale without express authorization.