

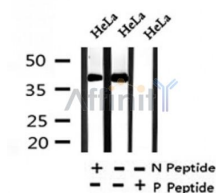
Phospho-TOB1 (Ser164) Ab

Cat.#: AF4439
Size: 50ul,100ul,200ul

Concn.: 1mg/ml
Source: Rabbit

Mol.Wt.: 38kDa
Clonality: Polyclonal

Application:	WB 1:500-1:2000
Reactivity:	Human,Mouse
Purification:	The Ab is from purified rabbit serum by affinity purification via sequential chromatography on phospho- and non-phospho-peptide affinity columns.
Specificity:	Phospho-TOB1 (Ser164) Ab detects endogenous levels of TOB1 only when phosphorylated at Ser164.
Immunogen:	A synthesized peptide derived from human TOB1 around the phosphorylation site of Ser164.
Uniprot:	P50616
Subcellular Location:	Nucleus;
Tissue Specificity:	Ubiquitous.
Similarity:	Belongs to the BTG family.
Storage Condition and Buffer:	Rabbit IgG in phosphate buffered saline , pH 7.4, 150mM NaCl, 0.02% sodium azide and 50% glycerol.Store at -20 °C.Stable for 12 months from date of receipt.



Western blot analysis of Phospho-TOB1 (Ser164) in lysates of HeLa , using Phospho-TOB1 (Ser164) Ab(AF4439).

IMPORTANT: For western blot, incubate membrane with diluted primary Ab in 5% w/v milk , 1X TBS, 0.1% Tween@20 at 4°C with gentle shaking, overnight.

For Research Use Only. Not for use in diagnostic and therapeutic procedures. Not for resale without express authorization.