

### Phospho-Tuberin/TSC2 (Ser1387) Ab

Cat.#: AF4436

Concn.: 1mg/ml

Mol.Wt.: 200kDa

Size: 50ul,100ul,200ul

Source: Rabbit

Clonality: Polyclonal

Application: WB 1:500-1:2000

Reactivity: Human, Mouse, Rat

**Purification:** The Ab is from purified rabbit serum by affinity purification via sequential chromatography on phospho- and non-phospho-peptide affinity columns.

Specificity: Phospho-Tuberin/TSC2 (Ser1387) Ab detects endogenous levels of Tuberin/TSC2 only when phosphorylated at Ser1387.

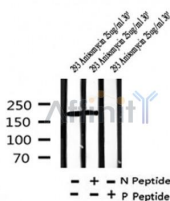
Immunogen: A synthesized peptide derived from human Tuberin/TSC2 around the phosphorylation site of Ser1387.

Uniprot: P49815

Subcellular Location: Cytoplasm. Membrane. At steady state found in association with membranes.

**Tissue Specificity:** Liver, brain, heart, lymphocytes, fibroblasts, biliary epithelium, pancreas, skeletal muscle, kidney, lung and placenta.

**Storage Condition and Buffer:** Rabbit IgG in phosphate buffered saline , pH 7.4, 150mM NaCl, 0.02% sodium azide and 50% glycerol.Store at -20 °C.Stable for 12 months from date of receipt.



Western blot analysis of Phospho-Tuberin/TSC2 (Ser1387) in lysates of 293 Anisomycin 25ug/ml 30', using Phospho-Tuberin/TSC2 (Ser1387) Ab(AF4436).

**IMPORTANT:** For western blot, incubate membrane with diluted primary Ab in 5% w/v milk , 1X TBS, 0.1% Tween@20 at 4°C with gentle shaking, overnight.

For Research Use Only. Not for use in diagnostic and therapeutic procedures. Not for resale without express authorization.