

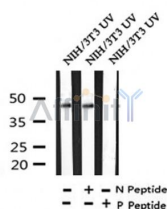
## Phospho-SEK1/MKK4 (Ser257) Ab

Cat.#: AF4434  
Size: 50ul, 100ul, 200ul

Concn.: 1mg/ml  
Source: Rabbit

Mol.Wt.: 44kDa  
Clonality: Polyclonal

Application:	WB 1:500-1:2000
Reactivity:	Human, Mouse, Rat
Purification:	The Ab is from purified rabbit serum by affinity purification via sequential chromatography on phospho- and non-phospho-peptide affinity columns.
Specificity:	Phospho-SEK1/MKK4 (Ser257) Ab detects endogenous levels of SEK1/MKK4 only when phosphorylated at Ser257.
Immunogen:	A synthesized peptide derived from human SEK1/MKK4 around the phosphorylation site of Ser257.
Uniprot:	P45985
Subcellular Location:	Nucleus;
Tissue Specificity:	Abundant expression is seen in the skeletal muscle. It is also widely expressed in other tissues.
Similarity:	The DVD domain (residues 364-387) contains a conserved docking site and is found in the mammalian MAP kinase kinases (MAP2Ks). The DVD sites bind to their specific upstream MAP kinase kinase kinases (MAP3Ks) and are essential for activation. The D domain (residues 34-52) contains a conserved docking site and is required for the binding to MAPK substrates. Belongs to the protein kinase superfamily. STE Ser/Thr protein kinase family. MAP kinase kinase subfamily.
Storage Condition and Buffer:	Rabbit IgG in phosphate buffered saline, pH 7.4, 150mM NaCl, 0.02% sodium azide and 50% glycerol. Store at -20 °C. Stable for 12 months from date of receipt.



Western blot analysis of Phospho-SEK1/MKK4 (Ser257) in lysates of NIH/3T3 UV, using Phospho-SEK1/MKK4 (Ser257) Ab (AF4434).

**IMPORTANT:** For western blot, incubate membrane with diluted primary Ab in 5% w/v milk , 1X TBS, 0.1% Tween@20 at 4°C with gentle shaking, overnight.

For Research Use Only. Not for use in diagnostic and therapeutic procedures. Not for resale without express authorization.