

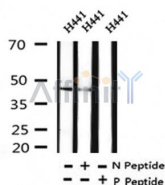
Phospho-TTF-1 (Ser327) Ab

Cat.#: AF4433
Size: 50ul,100ul,200ul

Concn.: 1mg/ml
Source: Rabbit

Mol.Wt.: 42kDa
Clonality: Polyclonal

Application:	WB 1:500-1:2000
Reactivity:	Human,Mouse,Rat
Purification:	The Ab is from purified rabbit serum by affinity purification via sequential chromatography on phospho- and non-phospho-peptide affinity columns.
Specificity:	Phospho-TTF-1 (Ser327) Ab detects endogenous levels of TTF-1 only when phosphorylated at Ser327.
Immunogen:	A synthesized peptide derived from human TTF-1 around the phosphorylation site of Ser327.
Uniprot:	P43699
Subcellular Location:	Nucleus.
Tissue Specificity:	Thyroid and lung.
Similarity:	Belongs to the NK-2 homeobox family.
Storage Condition and Buffer:	Rabbit IgG in phosphate buffered saline , pH 7.4, 150mM NaCl, 0.02% sodium azide and 50% glycerol.Store at -20 °C.Stable for 12 months from date of receipt.



Western blot analysis of Phospho-TTF-1 (Ser327) in lysates of H441, using Phospho-TTF-1 (Ser327) Ab(AF4433).

IMPORTANT: For western blot, incubate membrane with diluted primary Ab in 5% w/v milk , 1X TBS, 0.1% Tween@20 at 4°C with gentle shaking, overnight.

For Research Use Only. Not for use in diagnostic and therapeutic procedures. Not for resale without express authorization.