

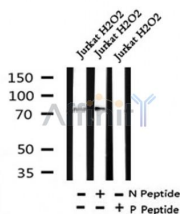
Phospho-Syk (Tyr352) Ab

Cat.#: AF4432
Size: 50ul,100ul,200ul

Concn.: 1mg/ml
Source: Rabbit

Mol.Wt.: 72kDa
Clonality: Polyclonal

Application:	WB 1:500-1:2000
Reactivity:	Human,Mouse,Rat
Purification:	The Ab is from purified rabbit serum by affinity purification via sequential chromatography on phospho- and non-phospho-peptide affinity columns.
Specificity:	Phospho-Syk (Tyr352) Ab detects endogenous levels of Syk only when phosphorylated at Tyr352.
Immunogen:	A synthesized peptide derived from human Syk around the phosphorylation site of Tyr352.
Uniprot:	P43405
Subcellular Location:	Cell membrane. Cytoplasm, cytosol.
Tissue Specificity:	Widely expressed in hematopoietic cells (at protein level). Within the B-cells compartment it is for instance expressed for pro-B-cells to plasma cells.
Similarity:	The SH2 domains mediate the interaction of SYK with the phosphorylated ITAM domains of transmembrane proteins. Some proteins like CLEC1B have a partial ITAM domain (also called hemITAM) containing a single YxxL motif. The interaction with SYK requires CLEC1B homodimerization. Belongs to the protein kinase superfamily. Tyr protein kinase family. SYK/ZAP-70 subfamily.
Storage Condition and Buffer:	Rabbit IgG in phosphate buffered saline , pH 7.4, 150mM NaCl, 0.02% sodium azide and 50% glycerol. Store at -20 °C. Stable for 12 months from date of receipt.



Western blot analysis of Phospho-Syk (Tyr352) in lysates of Jurkat H2O2, using Phospho-Syk (Tyr352) Ab(AF4432).

in 5% w/v milk , 1X TBS, 0.1% Tween@20 at 4°C with gentle shaking,
overnight.

For Research Use Only. Not for use in diagnostic and therapeutic
procedures. Not for resale without express authorization.