

Phospho-IRS-1 (Tyr896) Ab

Cat.#: AF4424

Size: 50ul, 100ul, 200ul

Concn.: 1mg/ml

Source: Rabbit

Mol.Wt.: 180kDa

Clonality: Polyclonal

Application: WB 1:500-1:2000

Reactivity: Human, Mouse, Rat

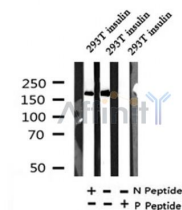
Purification: The Ab is from purified rabbit serum by affinity purification via sequential chromatography on phospho- and non-phospho-peptide affinity columns.

Specificity: Phospho-IRS-1 (Tyr896) Ab detects endogenous levels of IRS-1 only when phosphorylated at Tyr896.

Immunogen: A synthesized peptide derived from human IRS-1 around the phosphorylation site of Tyr896.

Uniprot: P35568

Storage Condition and Buffer: Rabbit IgG in phosphate buffered saline , pH 7.4, 150mM NaCl, 0.02% sodium azide and 50% glycerol. Store at -20 °C. Stable for 12 months from date of receipt.



Western blot analysis of Phospho-IRS-1 (Tyr896) in lysates of 293T insulin, using Phospho-IRS-1 (Tyr896) Ab(AF4424).

IMPORTANT: For western blot, incubate membrane with diluted primary Ab in 5% w/v milk , 1X TBS, 0.1% Tween@20 at 4°C with gentle shaking, overnight.

For Research Use Only. Not for use in diagnostic and therapeutic procedures. Not for resale without express authorization.