

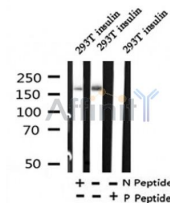
Phospho-IRS-1 (Ser318) Ab

Cat.#: AF4422
Size: 50ul,100ul,200ul

Concn.: 1mg/ml
Source: Rabbit

Mol.Wt.: 180kDa
Clonality: Polyclonal

Application:	WB 1:500-1:2000
Reactivity:	Human,Mouse,Rat
Purification:	The Ab is from purified rabbit serum by affinity purification via sequential chromatography on phospho- and non-phospho-peptide affinity columns.
Specificity:	Phospho-IRS-1 (Ser318) Ab detects endogenous levels of IRS-1 only when phosphorylated at Ser318.
Immunogen:	A synthesized peptide derived from human IRS-1 around the phosphorylation site of Ser318.
Uniprot:	P35568
Storage Condition and Buffer:	Rabbit IgG in phosphate buffered saline , pH 7.4, 150mM NaCl, 0.02% sodium azide and 50% glycerol.Store at -20 °C.Stable for 12 months from date of receipt.



Western blot analysis of Phospho-IRS-1 (Ser318) in lysates of 293T insulin, using Phospho-IRS-1 (Ser318) Ab(AF4422).

IMPORTANT: For western blot, incubate membrane with diluted primary Ab in 5% w/v milk , 1X TBS, 0.1% Tween@20 at 4°C with gentle shaking, overnight.

For Research Use Only. Not for use in diagnostic and therapeutic procedures. Not for resale without express authorization.