

## Phospho-DUSP1/MKP1 (Ser359) Ab

Cat.#: AF4416

Size: 50ul, 100ul, 200ul

Concn.: 1mg/ml

Source: Rabbit

Mol.Wt.: 40kDa

Clonality: Polyclonal

Application: WB 1:500-1:2000

Reactivity: Human, Mouse

Purification: The Ab is from purified rabbit serum by affinity purification via sequential chromatography on phospho- and non-phospho-peptide affinity columns.

Specificity: Phospho-DUSP1/MKP1 (Ser359) Ab detects endogenous levels of DUSP1/MKP1 only when phosphorylated at Ser359.

Immunogen: A synthesized peptide derived from human DUSP1/MKP1 around the phosphorylation site of Ser359.

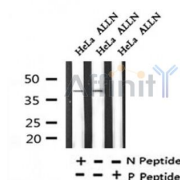
Uniprot: P28562

Subcellular Location: Nucleus;

Tissue Specificity: Expressed at high levels in the lung, liver placenta and pancreas. Moderate levels seen in the heart and skeletal muscle. Lower levels found in the brain and kidney.

Similarity: Belongs to the protein-tyrosine phosphatase family. Non-receptor class dual specificity subfamily.

Storage Condition and Buffer: Rabbit IgG in phosphate buffered saline , pH 7.4, 150mM NaCl, 0.02% sodium azide and 50% glycerol. Store at -20 °C. Stable for 12 months from date of receipt.



Western blot analysis of Phospho-DUSP1/MKP1 (Ser359) in lysates of HeLa and ALLN, using Phospho-DUSP1/MKP1 (Ser359) Ab(AF4416).

**IMPORTANT:** For western blot, incubate membrane with diluted primary Ab in 5% w/v milk , 1X TBS, 0.1% Tween@20 at 4°C with gentle shaking, overnight.

For Research Use Only. Not for use in diagnostic and therapeutic procedures. Not for resale without express authorization.