

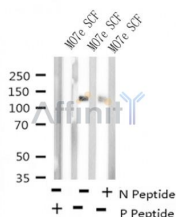
Phospho-c-Kit (Tyr723) Ab

Cat.#: AF4401
Size: 50ul,100ul,200ul

Concn.: 1mg/ml
Source: Rabbit

Mol.Wt.: 120kDa,145kDa
Clonality: Polyclonal

Application:	WB 1:500-1:2000
Reactivity:	Human,Mouse,Rat
Purification:	The Ab is from purified rabbit serum by affinity purification via sequential chromatography on phospho- and non-phospho-peptide affinity columns.
Specificity:	Phospho-c-Kit (Tyr723) Ab detects endogenous levels of c-Kit only when phosphorylated at Tyr723.
Immunogen:	A synthesized peptide derived from human c-Kit around the phosphorylation site of Tyr723.
Uniprot:	P10721
Subcellular Location:	Cell membrane and Cytoplasm. Detected in the cytoplasm of spermatozoa, especially in the equatorial and subacrosomal region of the sperm head.
Tissue Specificity:	Isoform 1 and isoform 2 are detected in spermatogonia and Leydig cells. Isoform 3 is detected in round spermatids, elongating spermatids and spermatozoa (at protein level). Widely expressed. Detected in the hematopoietic system, the gastrointestinal system, in melanocytes and in germ cells.
Similarity:	Belongs to the protein kinase superfamily. Tyr protein kinase family. CSF-1/PDGF receptor subfamily.
Storage Condition and Buffer:	Rabbit IgG in phosphate buffered saline , pH 7.4, 150mM NaCl, 0.02% sodium azide and 50% glycerol.Store at -20 °C.Stable for 12 months from date of receipt.



Western blot analysis of Phospho-c-Kit (Tyr723) in lysates of MO7e SCF 50 ng/ml for 2 min , using Phospho-c-Kit (Tyr723) Ab(AF4401).

in 5% w/v milk , 1X TBS, 0.1% Tween@20 at 4°C with gentle shaking,
overnight.

For Research Use Only. Not for use in diagnostic and therapeutic
procedures. Not for resale without express authorization.