

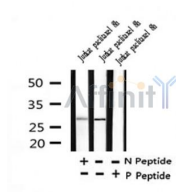
Phospho-Bcl-2 (Thr56) Ab

Cat.#: AF4400
Size: 50ul, 100ul, 200ul

Concn.: 1mg/ml
Source: Rabbit

Mol.Wt.: 28kDa
Clonality: Polyclonal

Application:	WB 1:500-1:2000
Reactivity:	Human
Purification:	The Ab is from purified rabbit serum by affinity purification via sequential chromatography on phospho- and non-phospho-peptide affinity columns.
Specificity:	Phospho-Bcl-2 (Thr56) Ab detects endogenous levels of Bcl-2 only when phosphorylated at Thr56.
Immunogen:	A synthesized peptide derived from human Bcl-2 around the phosphorylation site of Thr56.
Uniprot:	P10415
Subcellular Location:	Mitochondrion outer membrane. Nucleus membrane. Endoplasmic reticulum membrane.
Tissue Specificity:	Expressed in a variety of tissues.
Similarity:	BH1 and BH2 domains are required for the interaction with BAX and for anti-apoptotic activity. The BH4 motif is required for anti-apoptotic activity and for interaction with RAF1 and EGLN3. The loop between motifs BH4 and BH3 is required for the interaction with NLRP1. Belongs to the Bcl-2 family.
Storage Condition and Buffer:	Rabbit IgG in phosphate buffered saline, pH 7.4, 150mM NaCl, 0.02% sodium azide and 50% glycerol. Store at -20 °C. Stable for 12 months from date of receipt.



Western blot analysis of Phospho-Bcl-2 (Thr56) in lysates of Jurkat paclitaxel 8h, using Phospho-Bcl-2 (Thr56) Ab(AF4400).

IMPORTANT: For western blot, incubate membrane with diluted primary Ab in 5% w/v milk, 1X TBS, 0.1% Tween@20 at 4°C with gentle shaking, overnight.



Affinity Biosciences

website: www.affbiotech.com

order: order@affbiotech.com

For Research Use Only. Not for use in diagnostic and therapeutic procedures. Not for resale without express authorization.