

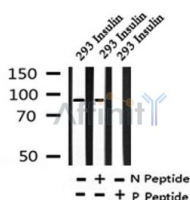
Phospho-IGF-I Receptor (Tyr1131) /Insulin Receptor (Tyr1146) Ab

Cat.#: AF4397
Size: 50ul,100ul,200ul

Concn.: 1mg/ml
Source: Rabbit

Mol.Wt.: 96kDa
Clonality: Polyclonal

Application:	WB 1:500-1:2000
Reactivity:	Human,Mouse,Rat,Pig
Purification:	The Ab is from purified rabbit serum by affinity purification via sequential chromatography on phospho- and non-phospho-peptide affinity columns.
Specificity:	Phospho-IGF-I Receptor (Tyr1131) /Insulin Receptor (Tyr1146) Ab detects endogenous levels of IGF-I Receptor only when phosphorylated at Tyr1131.
Immunogen:	A synthesized peptide derived from human IGF-I Receptor around the phosphorylation site of Tyr1131.
Uniprot:	P08069
Subcellular Location:	Cell membrane.
Tissue Specificity:	Found as a hybrid receptor with INSR in muscle, heart, kidney, adipose tissue, skeletal muscle, hepatoma, fibroblasts, spleen and placenta (at protein level). Expressed in a variety of tissues. Overexpressed in tumors, including melanomas, cancers of the colon, pancreas prostate and kidney.
Similarity:	Belongs to the protein kinase superfamily. Tyr protein kinase family. Insulin receptor subfamily.
Storage Condition and Buffer:	Rabbit IgG in phosphate buffered saline , pH 7.4, 150mM NaCl, 0.02% sodium azide and 50% glycerol.Store at -20 °C.Stable for 12 months from date of receipt.



Western blot analysis of Phospho-IGF-I Receptor (Tyr1131) /Insulin Receptor (Tyr1146) in lysates of 293 Insulin, using Phospho-IGF-I Receptor (Tyr1131) /Insulin Receptor (Tyr1146) Ab(AF4397).

IMPORTANT: For western blot, incubate membrane with diluted primary Ab in 5% w/v milk , 1X TBS, 0.1% Tween@20 at 4°C with gentle shaking, overnight.

For Research Use Only. Not for use in diagnostic and therapeutic procedures. Not for resale without express authorization.