

Phospho-M-CSF Receptor (Tyr708) Ab

Cat.#: AF4394

Size: 50ul,100ul,200ul

Concn.: 1mg/ml

Source: Rabbit

Mol.Wt.: 108kDa

Clonality: Polyclonal

Application: WB 1:500-1:2000

Reactivity: Human,Mouse,Rat

Purification: The Ab is from purified rabbit serum by affinity purification via sequential chromatography on phospho- and non-phospho-peptide affinity columns.

Specificity: Phospho-M-CSF Receptor (Tyr708) Ab detects endogenous levels of M-CSF Receptor only when phosphorylated at Tyr708.

Immunogen: A synthesized peptide derived from human M-CSF Receptor around the phosphorylation site of Tyr708.

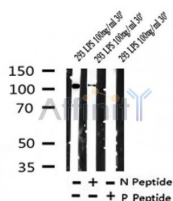
Uniprot: P07333

Subcellular Location: Membrane.

Tissue Specificity: Expressed in bone marrow and in differentiated blood mononuclear cells.

Similarity: The juxtamembrane domain functions as autoinhibitory region. Phosphorylation of tyrosine residues in this region leads to a conformation change and activation of the kinase. The activation loop plays an important role in the regulation of kinase activity. Phosphorylation of tyrosine residues in this region leads to a conformation change and activation of the kinase. Belongs to the protein kinase superfamily. Tyr protein kinase family. CSF-1/PDGF receptor subfamily.

Storage Condition and Buffer: Rabbit IgG in phosphate buffered saline , pH 7.4, 150mM NaCl, 0.02% sodium azide and 50% glycerol. Store at -20 °C. Stable for 12 months from date of receipt.



Western blot analysis of Phospho-M-CSF Receptor (Tyr708) in lysates of 293 LPS 100ng/ml 30', using Phospho-M-CSF Receptor (Tyr708) Ab(AF4394).

IMPORTANT: For western blot, incubate membrane with diluted primary Ab in 5% w/v milk , 1X TBS, 0.1% Tween@20 at 4°C with gentle shaking, overnight.

For Research Use Only. Not for use in diagnostic and therapeutic procedures. Not for resale without express authorization.