

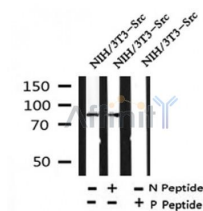
Phospho-P85 alpha(Tyr580) Ab

Cat.#: AF4370
Size: 50ul, 100ul, 200ul

Concn.: 1mg/ml
Source: Rabbit

Mol.Wt.: 85kDa
Clonality: Polyclonal

Application:	WB 1:500-1:2000
Reactivity:	Human, Mouse, Rat
Purification:	The Ab is from purified rabbit serum by affinity purification via sequential chromatography on phospho- and non-phospho-peptide affinity columns.
Specificity:	Phospho-P85 alpha(Tyr580) Ab detects endogenous levels of P85 alpha only when phosphorylated at Tyr580.
Immunogen:	A synthesized peptide derived from human P85 alpha around the phosphorylation site of Tyr580.
Uniprot:	P27986
Subcellular Location:	Cytoplasmic
Tissue Specificity:	Isoform 2 is expressed in skeletal muscle and brain, and at lower levels in kidney and cardiac muscle. Isoform 2 and isoform 4 are present in skeletal muscle (at protein level).
Similarity:	The SH3 domain mediates the binding to CBLB, and to HIV-1 Nef. Belongs to the PI3K p85 subunit family.
Storage Condition and Buffer:	Rabbit IgG in phosphate buffered saline, pH 7.4, 150mM NaCl, 0.02% sodium azide and 50% glycerol. Store at -20 °C. Stable for 12 months from date of receipt.



Western blot analysis of Phospho-P85 alpha(Tyr580) in lysates of NIH/3T3-Src, using Phospho-P85 alpha(Tyr580) Ab(AF4370).

IMPORTANT: For western blot, incubate membrane with diluted primary Ab in 5% w/v milk, 1X TBS, 0.1% Tween@20 at 4°C with gentle shaking, overnight.