

Acetyl-Histone H3 (Lys9/14/18/23/27) Ab

Cat.#: AF4365

Size: 50ul,100ul,200ul

Concn.: 1mg/ml

Source: Rabbit

Mol.Wt.: 17kDa

Clonality: Polyclonal

Application: WB 1:500-1:2000

Reactivity: Human, Mouse, Rat

Purification: Immunogen affinity purified.

Specificity: Acetyl-Histone H3 (K9 / K14 /K18 / K23 /K27) Ab detects endogenous levels of Acetyl-Histone H3 (K9 / K14 /K18 / K23 /K27).

Immunogen: A synthesized peptide derived from human Acetyl-Histone H3 (K9 / K14 /K18 / K23 /K27).

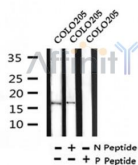
Uniprot: P68431/Q71DI3/P84243

Subcellular Location: Nucleus. Chromosome.

Tissue Specificity: Expressed during S phase, then expression strongly decreases as cell division slows down during the process of differentiation.

Similarity: Belongs to the histone H3 family.

Storage Condition and Buffer: Rabbit IgG in phosphate buffered saline , pH 7.4, 150mM NaCl, 0.02% sodium azide and 50% glycerol. Store at -20 °C. Stable for 12 months from date of receipt.



Western blot analysis of Acetyl-Histone H3 (K9 / K14 /K18 / K23 /K27) in lysates of COLO205, using Acetyl-Histone H3 (K9 / K14 /K18 / K23 /K27) Ab(AF4365).

IMPORTANT: For western blot, incubate membrane with diluted primary Ab in 5% w/v milk , 1X TBS, 0.1% Tween@20 at 4°C with gentle shaking, overnight.

For Research Use Only. Not for use in diagnostic and therapeutic procedures. Not for resale without express authorization.