

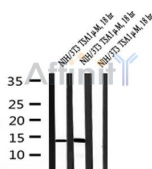
## Acetyl-Histone H2B (Lys20) Ab

Cat.#: AF4361  
Size: 50ul,100ul,200ul

Concn.: 1mg/ml  
Source: Rabbit

Mol.Wt.: 14kDa  
Clonality: Polyclonal

Application:	WB 1:500-1:2000
Reactivity:	Human,Mouse,Rat
Purification:	Immunogen affinity purified.
Specificity:	Acetyl-Histone H2B (K20) Ab detects endogenous levels of Acetyl-Histone H2B (K20) .
Immunogen:	A synthesized peptide derived from human Acetyl-Histone H2B (K20) .
Uniprot:	P57053
Subcellular Location:	Nucleus;
Similarity:	Belongs to the histone H2B family.
Storage Condition and Buffer:	Rabbit IgG in phosphate buffered saline , pH 7.4, 150mM NaCl, 0.02% sodium azide and 50% glycerol.Store at -20 °C.Stable for 12 months from date of receipt.



Western blot analysis of Acetyl-Histone H2B (K20) in lysates of NIH/3T3 TSA 1 uM, 18 hr, using Acetyl-Histone H2B (K20) Ab(AF4361).

**IMPORTANT:** For western blot, incubate membrane with diluted primary Ab in 5% w/v milk , 1X TBS, 0.1% Tween@20 at 4°C with gentle shaking, overnight.

For Research Use Only. Not for use in diagnostic and therapeutic procedures. Not for resale without express authorization.