

## Phospho-H2B (Tyr43) Ab

Cat.#: AF4359  
Size: 50ul, 100ul, 200ul

Concn.: 1mg/ml  
Source: Rabbit

Mol.Wt.: 14kDa  
Clonality: Polyclonal

Application: WB 1:500-1:2000

Reactivity: Human

Purification: The Ab is from purified rabbit serum by affinity purification via sequential chromatography on phospho- and non-phospho-peptide affinity columns.

Specificity: Phospho-H2B (Y43) Ab detects endogenous levels of H2B only when phosphorylated at Y43.

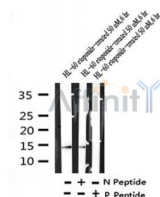
Immunogen: A synthesized peptide derived from human H2B around the phosphorylation site of Y43.

Uniprot: P57053

Subcellular Location: Nucleus;

Similarity: Belongs to the histone H2B family.

Storage Condition and Buffer: Rabbit IgG in phosphate buffered saline, pH 7.4, 150mM NaCl, 0.02% sodium azide and 50% glycerol. Store at -20 °C. Stable for 12 months from date of receipt.



Western blot analysis of Phospho-H2B (Y43) in lysates of HL-60 etoposide-treated 50 uM, 6 hr, using Phospho-H2B (Y43) Ab (AF4359).

**IMPORTANT:** For western blot, incubate membrane with diluted primary Ab in 5% w/v milk, 1X TBS, 0.1% Tween@20 at 4°C with gentle shaking, overnight.

For Research Use Only. Not for use in diagnostic and therapeutic procedures. Not for resale without express authorization.