

Phospho-NEDD4(Ser670) Ab

Cat.#: AF4336
Size: 50ul, 100ul, 200ul

Concn.: 1mg/ml
Source: Rabbit

Mol.Wt.: 110kDa
Clonality: Polyclonal

Application: WB 1:500-1:2000

Reactivity: Human

Purification: The Ab is from purified rabbit serum by affinity purification via sequential chromatography on phospho- and non-phospho-peptide affinity columns.

Specificity: Phospho-NEDD4(Ser670) Ab detects endogenous levels of NEDD4 only when phosphorylated at Ser670.

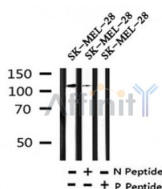
Immunogen: A synthesized peptide derived from human NEDD4 around the phosphorylation site of Ser670.

Uniprot: P46934

Subcellular Location: Cytoplasm. Cell membrane. Recruited to the plasma membrane by GRB10. Once complexed with GRB10 and IGF1R, follows IGF1R internalization, remaining associated with early endosomes. Uncouples from IGF1R-containing endosomes before the sorting of the receptor to the lysosomal compartment (By similarity). May be recruited to exosomes by NDFIP1.

Similarity: The WW domains mediate interaction with PPxY motif-containing proteins (PubMed:21191027). The WW domains mediate interaction with LITAF, RNF11, WBP1, WBP2, MPEPAI, NDFIP1 and PRRG2 (By similarity).

Storage Condition and Buffer: Rabbit IgG in phosphate buffered saline, pH 7.4, 150mM NaCl, 0.02% sodium azide and 50% glycerol. Store at -20 °C. Stable for 12 months from date of receipt.



Western blot analysis of Phospho-NEDD4(Ser670) in lysates of SK-MEL-28, using Phospho-NEDD4(Ser670) Ab(AF4336).

IMPORTANT: For western blot, incubate membrane with diluted primary Ab in 5% w/v milk, 1X TBS, 0.1% Tween@20 at 4°C with gentle shaking,

overnight.

For Research Use Only. Not for use in diagnostic and therapeutic procedures. Not for resale without express authorization.