

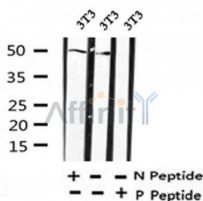
Phospho-PPARD (Thr256) Ab

Cat.#: AF4331
Size: 50ul,100ul,200ul

Concn.: 1mg/ml
Source: Rabbit

Mol.Wt.: 50kDa
Clonality: Polyclonal

Application:	WB 1:500-1:2000
Reactivity:	Human,Mouse,Rat,Pig
Purification:	The Ab is from purified rabbit serum by affinity purification via sequential chromatography on phospho- and non-phospho-peptide affinity columns.
Specificity:	Phospho-PPARD (Thr256) Ab detects endogenous levels of PPARD only when phosphorylated at Thr256.
Immunogen:	A synthesized peptide derived from human PPARD around the phosphorylation site of Thr256.
Uniprot:	Q03181
Subcellular Location:	Nucleus.
Tissue Specificity:	Ubiquitous with maximal levels in placenta and skeletal muscle.
Similarity:	Belongs to the nuclear hormone receptor family. NR1 subfamily.
Storage Condition and Buffer:	Rabbit IgG in phosphate buffered saline , pH 7.4, 150mM NaCl, 0.02% sodium azide and 50% glycerol.Store at -20 °C.Stable for 12 months from date of receipt.



Western blot analysis of Phospho-PPARD (Thr256) in lysates of 3T3 , using Phospho-PPARD (Thr256) Ab(AF4331).

IMPORTANT: For western blot, incubate membrane with diluted primary Ab in 5% w/v milk , 1X TBS, 0.1% Tween@20 at 4°C with gentle shaking, overnight.

For Research Use Only. Not for use in diagnostic and therapeutic procedures. Not for resale without express authorization.