

Phospho-ITCH(Tyr420) Ab

Cat.#: AF4327

Size: 50ul, 100ul, 200ul

Concn.: 1mg/ml

Source: Rabbit

Mol.Wt.: 105kDa

Clonality: Polyclonal

Application: WB 1:500-1:2000

Reactivity: Human, Mouse

Purification: The Ab is from purified rabbit serum by affinity purification via sequential chromatography on phospho- and non-phospho-peptide affinity columns.

Specificity: Phospho-ITCH(Tyr420) Ab detects endogenous levels of ITCH only when phosphorylated at Tyr420.

Immunogen: A synthesized peptide derived from human ITCH around the phosphorylation site of Tyr420.

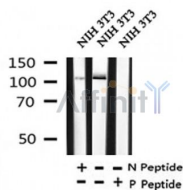
Uniprot: Q96J02

Subcellular Location: Cell membrane. Cytoplasm. Nucleus. Associates with endocytic vesicles. May be recruited to exosomes by NDFIP1.

Tissue Specificity: Widely expressed.

Similarity: The WW domains mediate interaction with PPxY motif-containing proteins.

Storage Condition and Buffer: Rabbit IgG in phosphate buffered saline, pH 7.4, 150mM NaCl, 0.02% sodium azide and 50% glycerol. Store at -20 °C. Stable for 12 months from date of receipt.



IMPORTANT: For western blot, incubate membrane with diluted primary Ab in 5% w/v milk, 1X TBS, 0.1% Tween@20 at 4°C with gentle shaking, overnight.