

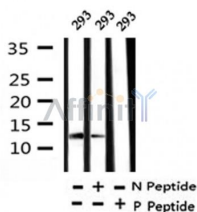
Phospho-RBX1(Thr9) Ab

Cat.#: AF4325
Size: 50ul,100ul,200ul

Concn.: 1mg/ml
Source: Rabbit

Mol.Wt.: 13kDa
Clonality: Polyclonal

Application:	WB 1:500-1:2000
Reactivity:	Human, Mouse, Rat
Purification:	The Ab is from purified rabbit serum by affinity purification via sequential chromatography on phospho- and non-phospho-peptide affinity columns.
Specificity:	Phospho-RBX1(Thr9) Ab detects endogenous levels of RBX1 only when phosphorylated at Thr9.
Immunogen:	A synthesized peptide derived from human RBX1 around the phosphorylation site of Thr9.
Uniprot:	P62877
Subcellular Location:	Cytoplasm. Nucleus.
Tissue Specificity:	Widely expressed.
Similarity:	The RING-type zinc finger domain is essential for ubiquitin ligase activity. It coordinates an additional third zinc ion. Belongs to the RING-box family.
Storage Condition and Buffer:	Rabbit IgG in phosphate buffered saline, pH 7.4, 150mM NaCl, 0.02% sodium azide and 50% glycerol. Store at -20 °C. Stable for 12 months from date of receipt.



Western blot analysis of Phospho-RBX1(Thr9) in lysates of 293, using Phospho-RBX1(Thr9) Ab(AF4325).

IMPORTANT: For western blot, incubate membrane with diluted primary Ab in 5% w/v milk, 1X TBS, 0.1% Tween@20 at 4°C with gentle shaking, overnight.

For Research Use Only. Not for use in diagnostic and therapeutic procedures. Not for resale without express authorization.