

Phospho-ASPP2 (Ser698) Ab

Cat.#: AF4319
Size: 50ul,100ul,200ul

Concn.: 1mg/ml
Source: Rabbit

Mol.Wt.: 126kDa
Clonality: Polyclonal

Application: WB 1:500-1:2000

Reactivity: Human, Mouse, Rat

Purification: The Ab is from purified rabbit serum by affinity purification via sequential chromatography on phospho- and non-phospho-peptide affinity columns.

Specificity: Phospho-ASPP2 (Ser698) Ab detects endogenous levels of ASPP2 only when phosphorylated at Ser698.

Immunogen: A synthesized peptide derived from human ASPP2 around the phosphorylation site of Ser698.

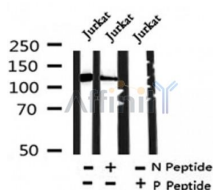
Uniprot: Q13625

Subcellular Location: Cytoplasm > perinuclear region. Nucleus. Predominantly found in the perinuclear region. Some small fraction is nuclear. Sequester in the cytoplasm on overexpression of DDX42.

Tissue Specificity: Widely expressed. Expressed in spleen, thymus, prostate, testis, ovary, small intestine, colon and peripheral blood leukocyte. Reduced expression in breast carcinomas expressing a wild-type TP53 protein. Overexpressed in lung cancer cell lines.

Similarity: The ankyrin repeats and the SH3 domain are required for a specific interactions with TP53. Belongs to the ASPP family.

Storage Condition and Buffer: Rabbit IgG in phosphate buffered saline, pH 7.4, 150mM NaCl, 0.02% sodium azide and 50% glycerol. Store at -20 °C. Stable for 12 months from date of receipt.



Western blot analysis of Phospho-ASPP2 (Ser698) in lysates of Jurkat, using Phospho-ASPP2 (Ser698) Ab (AF4319).

in 5% w/v milk , 1X TBS, 0.1% Tween@20 at 4°C with gentle shaking,
overnight.

For Research Use Only. Not for use in diagnostic and therapeutic
procedures. Not for resale without express authorization.