

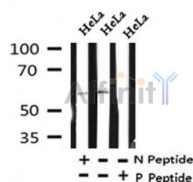
## Phospho-MST2(Ser316) Ab

Cat.#: AF4314  
Size: 50ul, 100ul, 200ul

Concn.: 1mg/ml  
Source: Rabbit

Mol.Wt.: 56kDa  
Clonality: Polyclonal

Application:	WB 1:500-1:2000
Reactivity:	Human, Mouse, Rat
Purification:	The Ab is from purified rabbit serum by affinity purification via sequential chromatography on phospho- and non-phospho-peptide affinity columns.
Specificity:	Phospho-MST2(Ser316) Ab detects endogenous levels of MST2 only when phosphorylated at Ser316.
Immunogen:	A synthesized peptide derived from human MST2 around the phosphorylation site of Ser316.
Uniprot:	Q13188
Subcellular Location:	Cytoplasm. Nucleus. The caspase-cleaved form cycles between nucleus and cytoplasm.
Tissue Specificity:	Expressed at high levels in adult kidney, skeletal and placenta tissues and at very low levels in adult heart, lung and brain tissues.
Similarity:	Belongs to the protein kinase superfamily. STE Ser/Thr protein kinase family. STE20 subfamily.
Storage Condition and Buffer:	Rabbit IgG in phosphate buffered saline, pH 7.4, 150mM NaCl, 0.02% sodium azide and 50% glycerol. Store at -20 °C. Stable for 12 months from date of receipt.



Western blot analysis of Phospho-MST2(Ser316) in lysates of HeLa, using Phospho-MST2(Ser316) Ab(AF4314).

**IMPORTANT:** For western blot, incubate membrane with diluted primary Ab in 5% w/v milk, 1X TBS, 0.1% Tween@20 at 4°C with gentle shaking, overnight.

---

procedures. Not for resale without express authorization.